

# Wingmaster Elbow Tower

Precision and flexibility like never before.



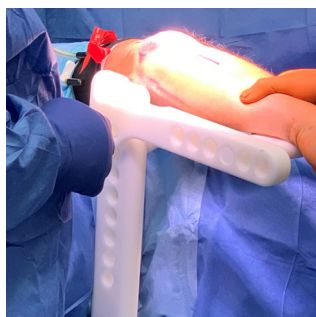
## Product Features

- Precision and flexibility like never before.
- Unique design gives you the ability to make adjustments when and where you need them.
- Rigid positioning and flexion support, you'll never feel like you're compromising again.
- Compatible with full range of Broadhead products.
- Ideal for olecranon and distal humerus fractures.
- Easy to use and easy to clean (autoclave compatible.)

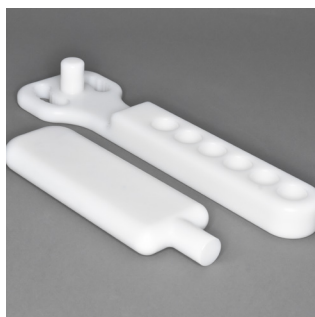
## System Includes (#ET1000)

- Adjustable Pivot Base
- Vertical Tower with Bolster
- Extension Support with Paddle

### PRODUCT IN USE



### ADDITIONAL PRODUCTS



**WINGMASTER EXTENSION SUPPORT**  
#ET1020



**SURGICAL RAIL CLAMP**  
#RC100



**LADDERLOC ANKLE DISTRACTION SYSTEM**  
#ST1000



[www.matchgrademed.com](http://www.matchgrademed.com) | [sales@matchgrademed.com](mailto:sales@matchgrademed.com)

