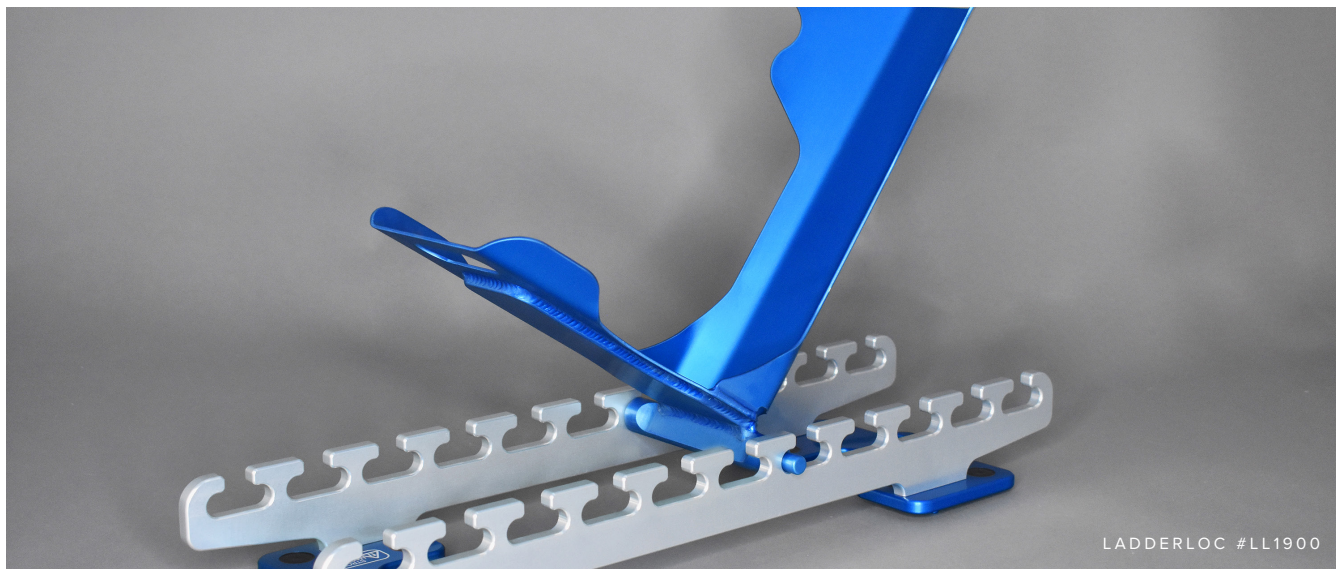


Ladderloc Knee Support System

The familiar solution to total knee arthroplasty.



Product Features

- Easy to use and easy to clean design.
- Familiar function with positive stop flexion adjustment.
- Reduces hands on the patient and perioperative resource time.
- High strength precision foot holder, will not bend, crack, or loose shape.
- Foot holder shape and construction allows for firm wrap and greater foot stabilization.
- Aircraft grade material for greater strength and durability.
- Respects the sterile field with Fieldloc technology.
- Longer and more stable rail system.

System Includes

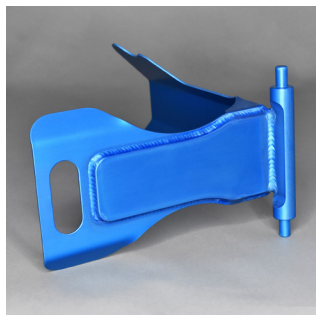
- Ladderloc Sterile Component Set (#LL501)
 - Ladderloc Foot Holder (#AF855)
 - Ladderloc Rail (#LL100)
- Universal Mounting Platform (#FL500)

Dimensions

Adjustment Rail: 21”L x 7”W x 2.75”H

Foot Holder: 13”H x 10”L x 6.5”W

INCLUDED PRODUCTS

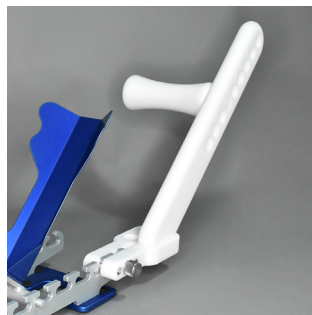


LADDERLOC FOOT HOLDER
#LL916



LADDERLOC RAIL
#LL100

ADDITIONAL PRODUCTS



THIGH BOLSTER TOWER
#LL2100



LADDERLOC PIVOT FOOT HOLDER
#LL910



www.matchgrademed.com | sales@matchgrademed.com

